



NATTÉ & VELUM XL

The outdoor curtains solution
La solution rideaux extérieurs



DICKSON[®]
solar fabrics

Velum XL



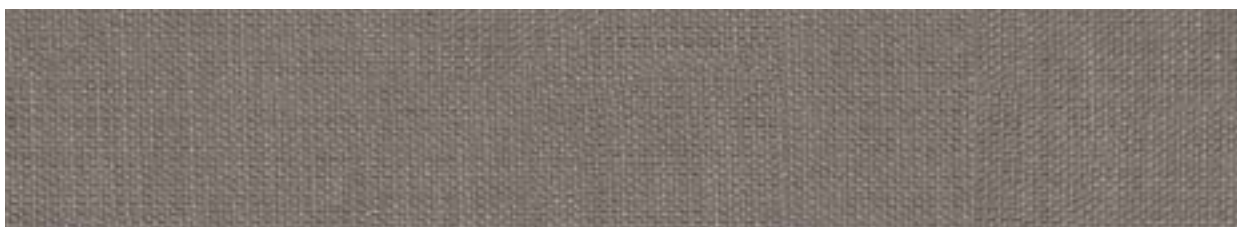
Graumel VLM 2003 300



Natural VLM 2000 300



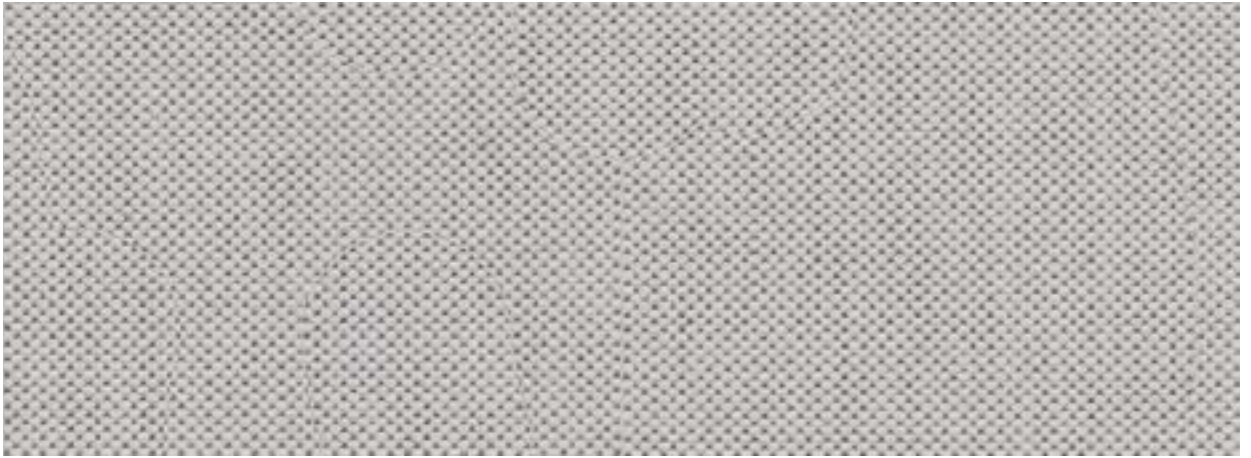
Heather VLM 2002 300



Nature Grey VLM 2011 300



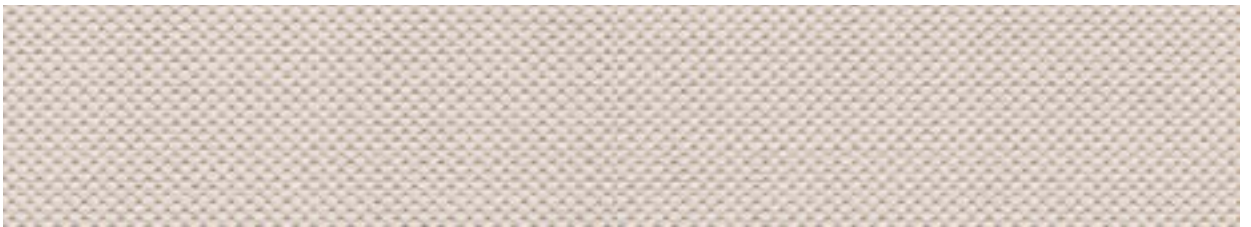
Natté XL



Graumel NAT 10035 300



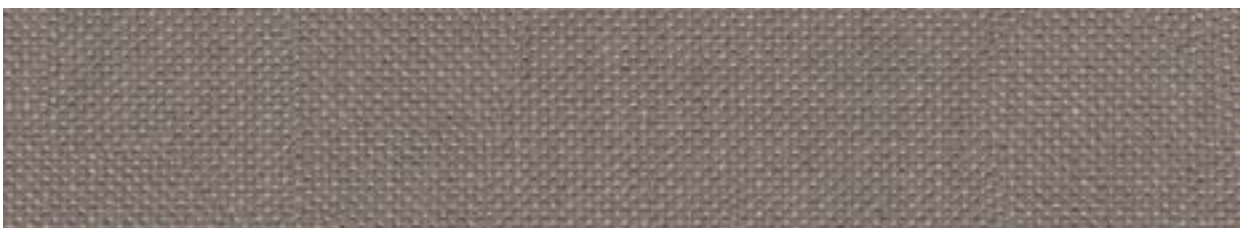
White NAT 10020 300



Antique White NAT 10036 300



Heather Beige NAT 10037 300



Nature Grey NAT 10040 300



Fade resistant
Solidité des coloris
4-5/5 - ISO 105 B04



Protects from the UV and Heat
Protège des UV et de la chaleur



Mold Resistant
Résistant aux moisissures



Tear Resistant
Résistant à la déchirure



Easy Care
Entretien facile



10 rue des Châteaux
BP 109 - Z.I. La Pilaterie
59443 Wasquehal Cedex - France
www.dickson-constant.com
contact@dickson-constant.com
Tél. +33 (0)3 20 45 59 59

Performance fabrics for

Solar protection
Outdoor furniture
Indoor furniture
Marine furnishing
Flooring



Edition September 2017 - SAS DICKSON CONSTANT - capital 12.640.000 euros - 381 347 970 R.C.S. Lille Métropole - Photos : ©dickson / Studio Tekhné - Glen Raven™ is a trademark of Glen Raven, Inc. - Dickson Constant is a Glen Raven company - *see general warranty conditions on www.dickson-constant.com